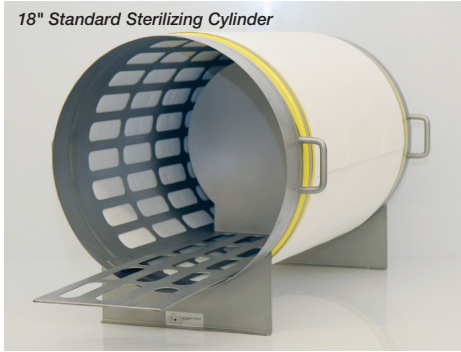


CBC Makes Sterilizing Cylinders to Meet Your Need and Budget!

18" Standard Sterilizing Cylinder



Standard Sterilizing Cylinder (Sizes: 12" dia x 24" long or 18" dia x 30" long)

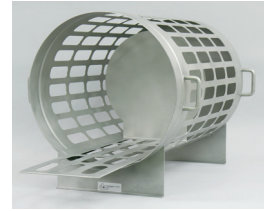
16 gage stainless steel construction with rolled "stiffener edge". Large vent openings to increase stream/heat penetration rate.

- 3-layer DW4 Filter Media.
- Supply tray with backstop and supply tray track.
- Glass bead finish
- Carrying handles.

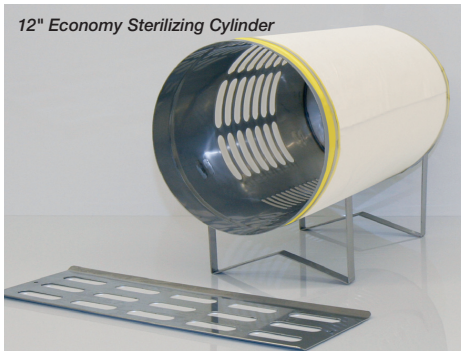
DW4 Filter Media precut to width.



18" Standard Sterilizing Cylinder with carrying handles.



12" Economy Sterilizing Cylinder



Economy Sterilizing Cylinder (Sizes: 12" dia x 24" long or 18" dia x 30" long)

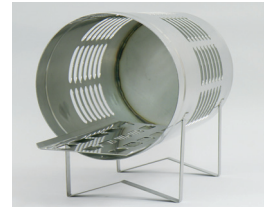
16 gage stainless steel construction with rolled "stiffener edge". Large vent openings to increase stream/heat penetration rate.

- 3-layer DW4 Filter Media.
- Supply tray.
- Competitively priced!

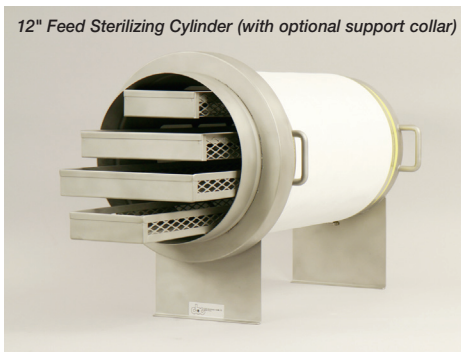
DW4 Filter Media precut to width.



12" Economy Sterilizing Cylinder with supply tray.



12" Feed Sterilizing Cylinder (with optional support collar)



Feed Sterilizing Cylinder (Sizes: 12" dia x 24" long or 18" dia x 30" long)

NOTE: Feed tray racks are not in the way of the supply tray so cylinder can also be used as a regular supply cylinder.

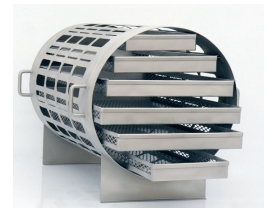
16 gage stainless steel construction with rolled "stiffener edge". Large vent openings to increase stream/heat penetration rate.

- 3-layer DW4 Filter Media.
- 4- and 6-tray sizes.
- Glass bead finish.
- Carrying handles.
- Preserves nutritional value of feed.

DW4 Filter Media precut to width.



18" Feed Sterilizing Cylinder with 6 trays has a feed capacity of 110 pounds.



Transfer Carts to Match Isolator Type and Size

Stainless steel transfer carts/trolleys with lockable casters and table clamps to secure sterilizing cylinders in place and prevent accidents. Carts/trolleys are made to match your isolator set-up. Cylinder is same height as isolator port making connection easier.

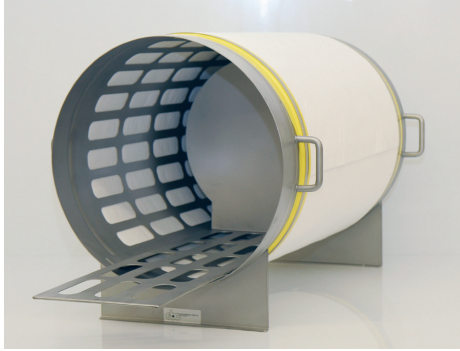
For more information about our Sterilizing Cylinders including our Standard, Economy and special Feed Sterilizing Cylinders call **608.273.9661**, or visit our website at: www.cbcclean.com



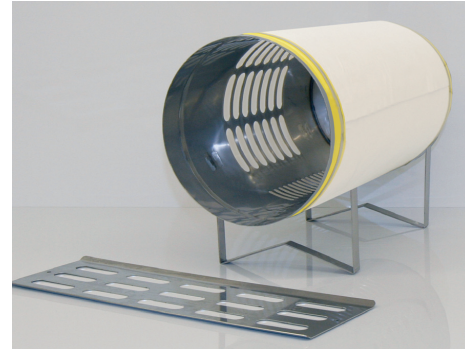
**Quality Built to Protect
Both Research and Researchers**

Class Biologically Clean, Ltd • 810 Stewart Street • Madison, WI 53713

CBC Sterilizing Cylinder Feature Comparison Chart



*CBC Standard Sterilizing Cylinder.
Enhanced quality features!*



*CBC Economy Sterilizing Cylinder.
Competitively priced!*

Features	CBC Standard	CBC Economy	Competitor
16 gage (thicker/stronger) stainless steel construction vs. 18 gage stainless steel construct	YES	YES	NO
Rolled "stiffener edge" vs. welded edge (easier to clean)	YES	YES	NO
3 layers of DW4 filter media	YES	YES	NO
AFS4 filter media (Fiberglass. Issues with both handling and safety.)	NO	NO	YES
Easy to replace filter media	YES	YES	NO
Large vent openings to increase steam/heat penetration rate	YES	YES	NO
Stainless steel clamp	YES	YES	YES
Supply tray	YES	YES	YES
Supply tray w/backstop	YES	NO	NO
Supply tray track for keeping supply tray level	YES	NO	NO
Glass bead finish	YES	NO	NO
Carrying handles	YES	NO	NO
Optional support collar	YES	YES	NO
12" dia. x 24" long	YES	YES	YES
18" dia. x 30" long	YES	YES	NO
Custom sizes	YES	YES	NO
Optional carts to ease transfer from autoclave to isolator (Note: Same height as isolators.)	YES	YES	NO
Stabilizing feet slip into built-in cart clamps	YES	NO	NO
Optional feed trays (see Feed Sterilizing Cylinder)	YES	NO	NO

For more information about our Sterilizing Cylinders including our Standard, Economy and special Feed Sterilizing Cylinders call **608.273.9661**, or visit our website at: www.cbcclean.com



*Quality Built to Protect
Both Research and Researchers*

Class Biologically Clean, Ltd • 810 Stewart Street • Madison, WI 53713